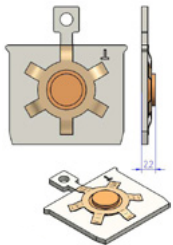


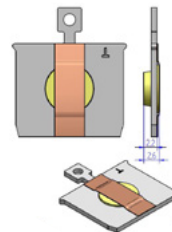
Sample Holders (Flag Style)

LT-STM/AFM

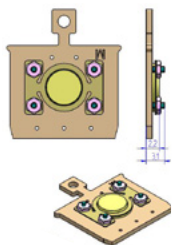
CreaTec sample holders for LT-STM/SAFM Systems are offered in multiple designs. Each type presents different specifications for exclusive systems. The sample holders are available as complete sets as well as single parts. In addition, it is also possible to require special materials.



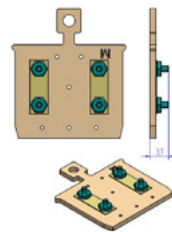
TYPE	Metal-SH-standard
DRAWING NUMBER	00012398
MADE FROM	Ta
SPECIFICATIONS	<ul style="list-style-type: none"> • with special cap to fix hat-shaped metal samples by spot welding • not assembled



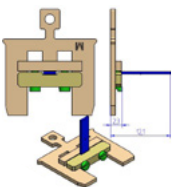
TYPE	Metal-SH-hole
DRAWING NUMBER	00012506
MADE FROM	Ta
SPECIFICATIONS	<ul style="list-style-type: none"> • with hole in sample plate and cap to fix hat-shaped metal sample by spot welding



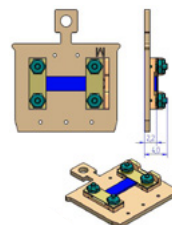
TYPE	Metal-SH-screwable
DRAWING NUMBER	00012406
MADE FROM	Mo
SPECIFICATIONS	<ul style="list-style-type: none"> • with special cap to fix hat-shaped metal samples by screwing • upgradeable w/ 5 contact-bar



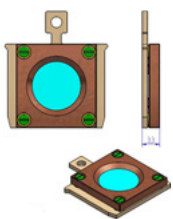
TYPE	Custom built-SH
DRAWING NUMBER	00012415
MADE FROM	Stainless steel, tantalum or molybdenum
SPECIFICATIONS	<ul style="list-style-type: none"> • upgradeable w/ 5 contact-bar



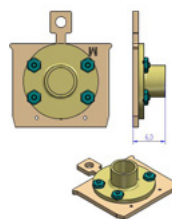
TYPE	Cleavage-SH
DRAWING NUMBER	00012541
MADE FROM	Mo
SPECIFICATIONS	<ul style="list-style-type: none"> • special frame to mount the sample upright • the special holding frame allows to cleave the sample with the wobble stick while the sample holder is located on the system manipulator



TYPE	Wafer-SH
DRAWING NUMBER	00012413
MADE FROM	Ta (others on request)
SPECIFICATIONS	<ul style="list-style-type: none"> • the Si-Wafer has to be mounted between two Mo-bars • equipped w/ side contact for direct heating of the Si-wafer • upgradeable w/ 5 contact-bar • not assembled



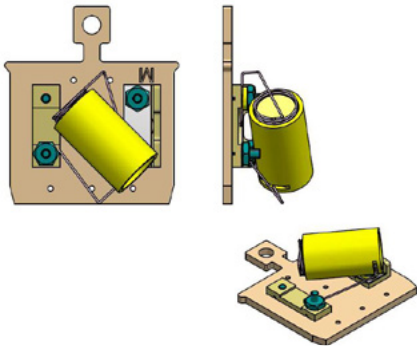
TYPE	QMB-SH
DRAWING NUMBER	00008436
MADE FROM	Mo
SPECIFICATIONS	<ul style="list-style-type: none"> • incl. gold plated quartz micro crystal to determine the flux density in UHV • suitable for STM manipulator head at stage with side contact • oscillator, electronics and cabling available



TYPE	Mini-Crucible-SH
DRAWING NUMBER	00012107
MADE FROM	Mo
CRUCIBLE MATERIAL	Ta, Mo, W (others on request)
SPECIFICATIONS	<ul style="list-style-type: none"> • passive heating via heating stage of the system manipulator • exact temperature measurement via pyrometer available

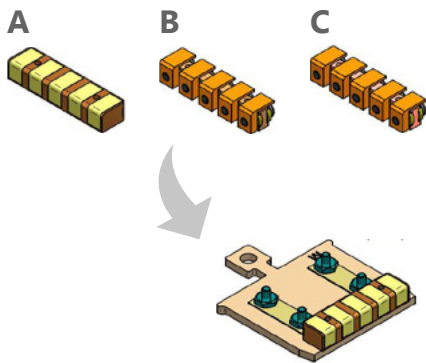
Sample Holders (Flag Style)

LT-STM/AFM



TYPE	Mini-Crucible-SH w/ filament
DRAWING NUMBER	00012848
MADE FROM	Mo
CRUCIBLE MATERIAL	Al ₂ O ₃ encircled by a filament
SPECIFICATIONS	<ul style="list-style-type: none"> • suitable for STM manipulator head at stage with side contact to operate the filament • exact temperature measurement via pyrometer available

Available Upgrades



TYPE	5 contact-bar		
VERSION	A	B	C
DRAWING NUMBER	00005608	00012509	00012511
MADE FROM	Macor gold plated	stainless steel	Mo
MAX. TEMP.	300 °C	600 °C	1600 °C
SPECIFICATIONS	<ul style="list-style-type: none"> • special bar equipped with 5 contacts to realize electrical measurements of the sample during investigation in CreaTec L-STM/AFM Systems 		